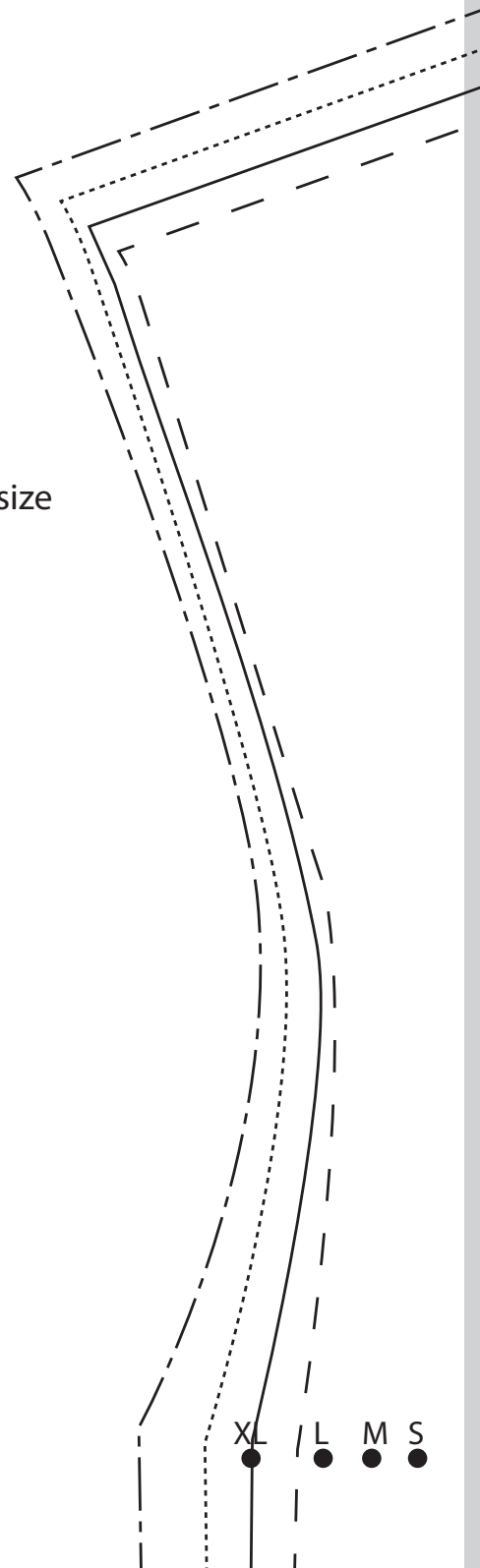
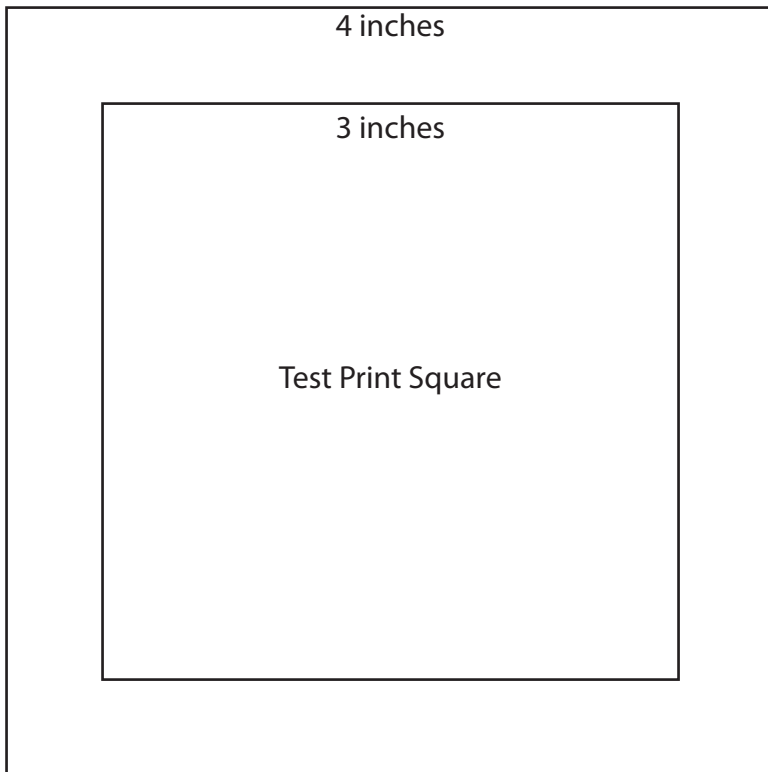


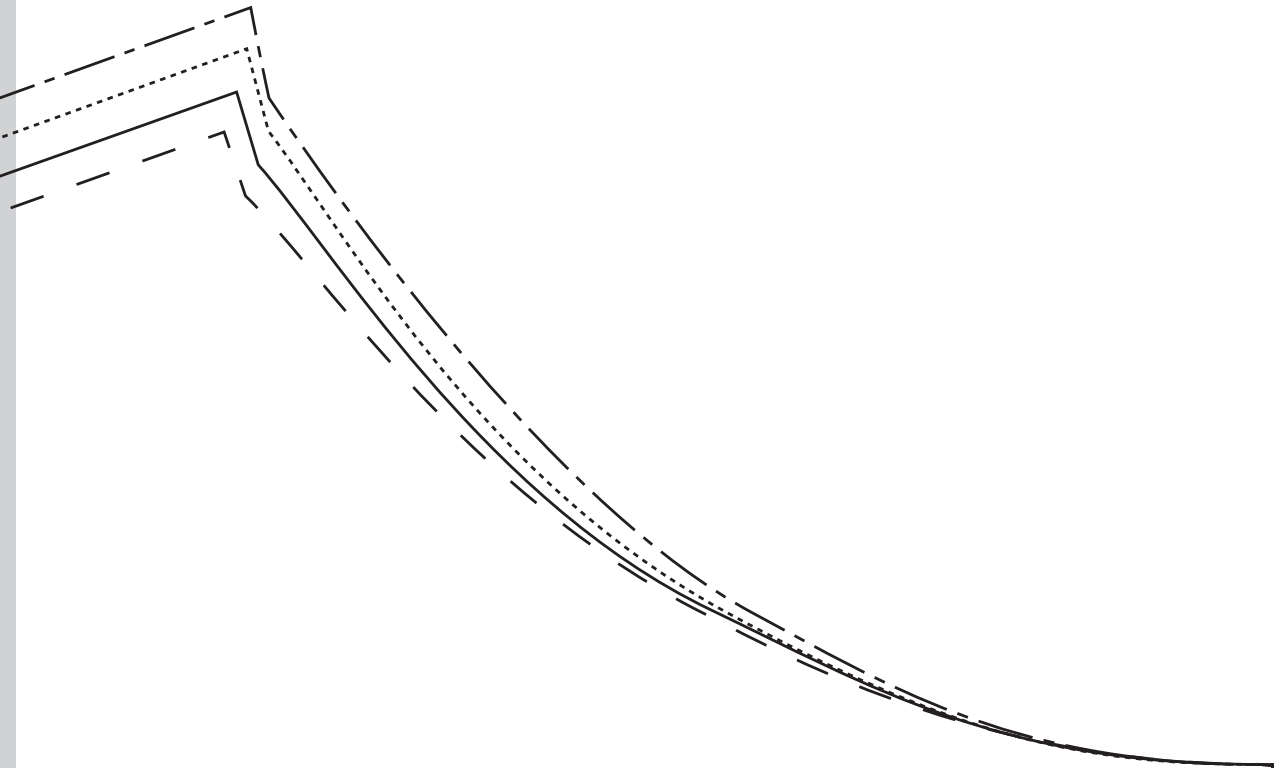
Up In Arms Blouse by Erin Weisbart of SeamstressErin Designs
Sew It All TV Episode 905

- Front Yoke prints on pages 1-2
- Plain Sleeve prints on pages 3-4
- Back Yoke prints on pages 5-6
- Flutter Sleeve prints on pages 5-8
- Front and Back Prints on pages 9-14

Grey lines mark the edge of the printable area and should not be cut off.

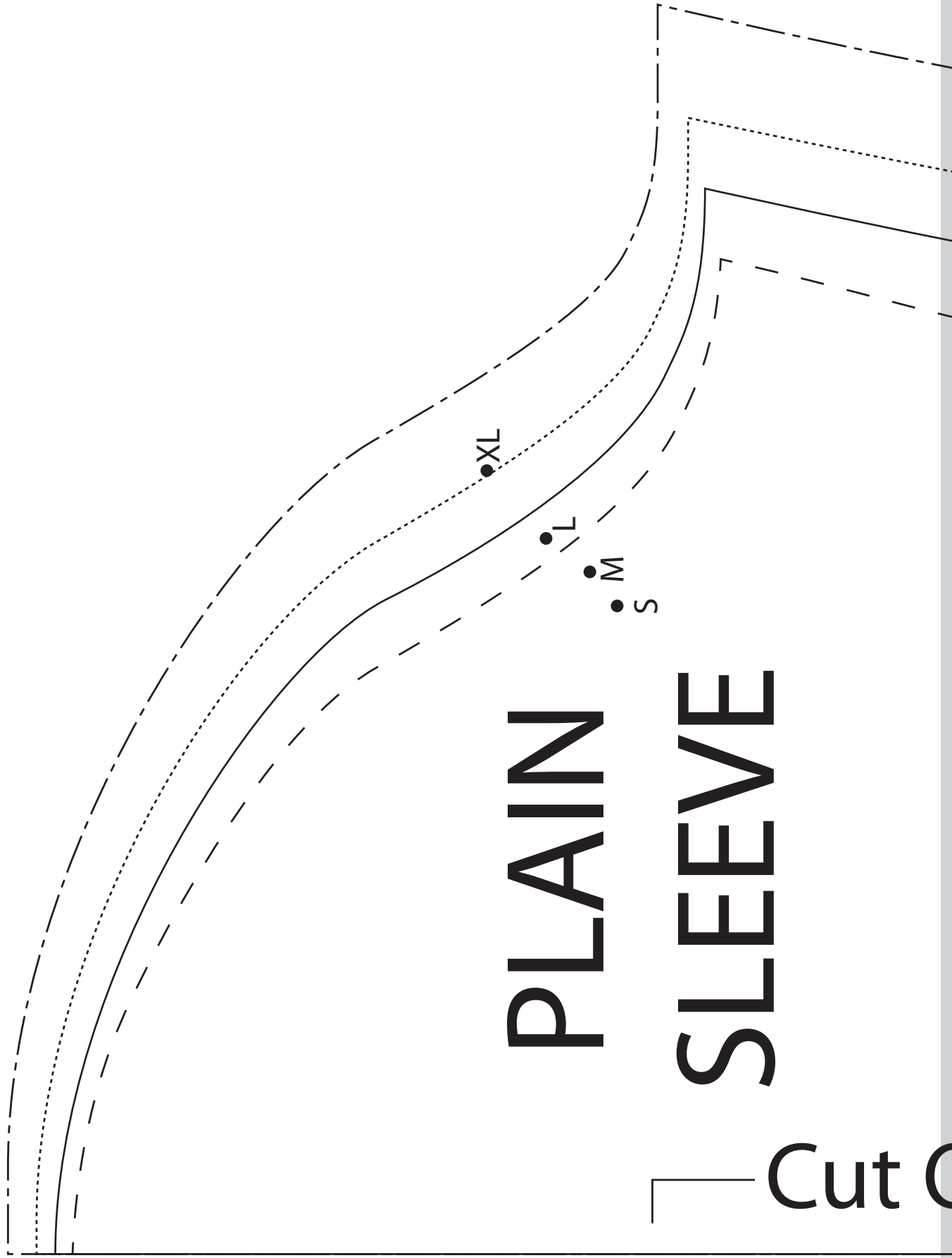
Make sure that your test square prints at the correct size before proceeding to sew your pattern.





FRONT YOKE

Cut On Fold



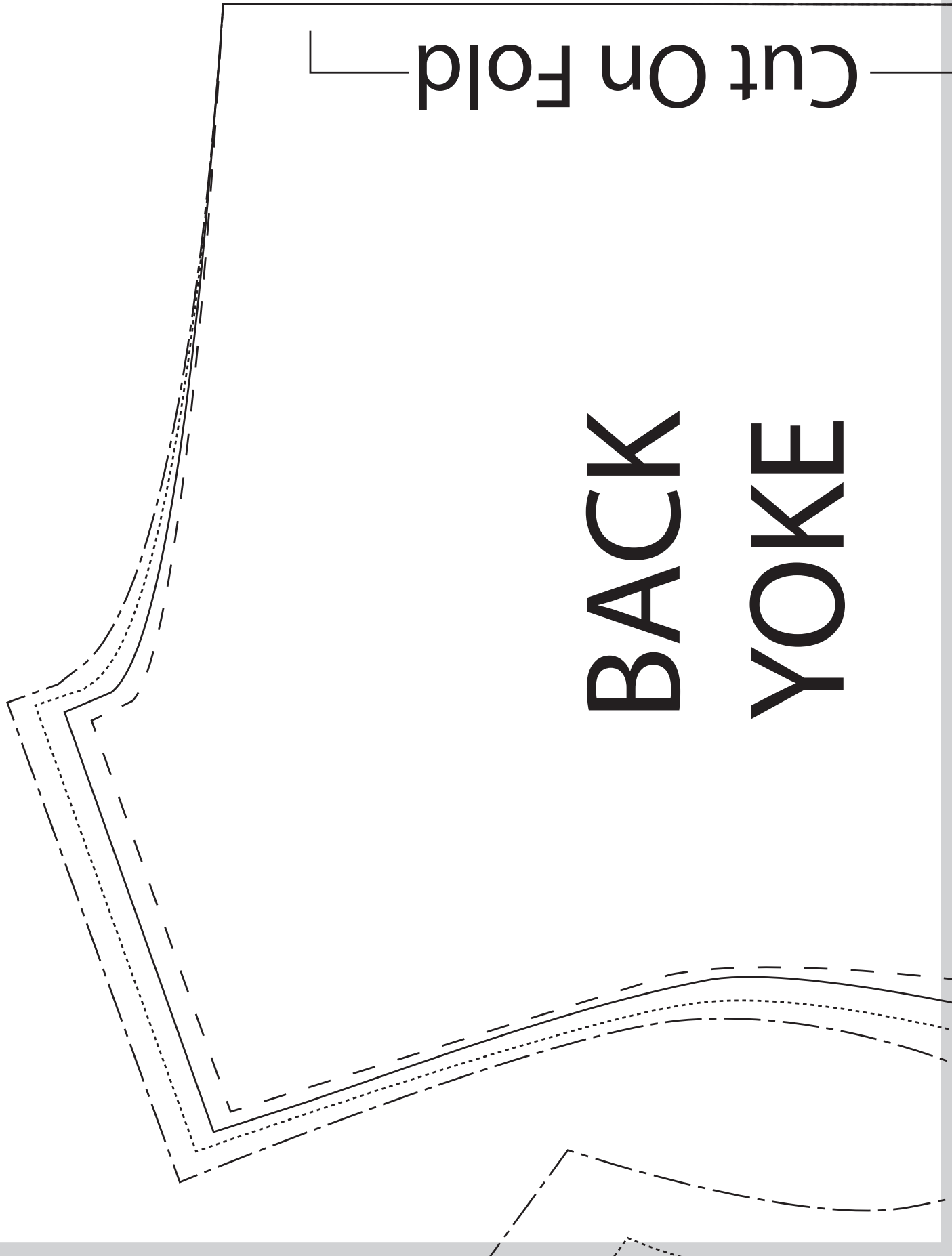
PLAIN SLEEVE

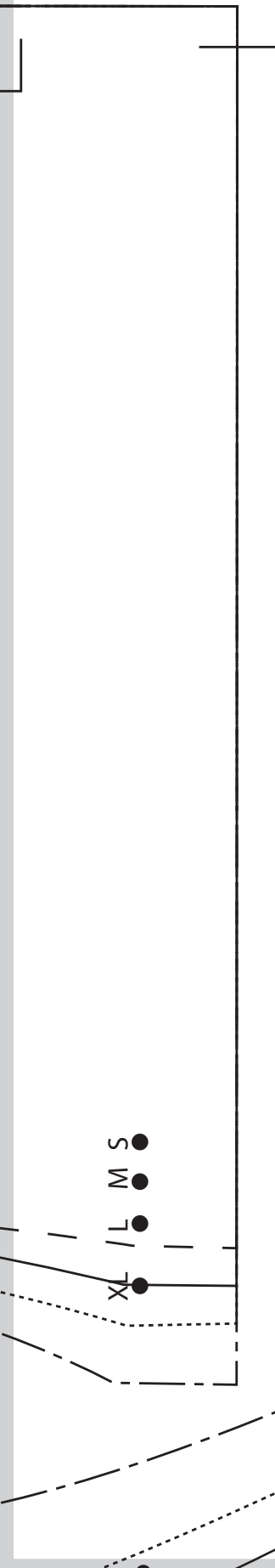
Cut C

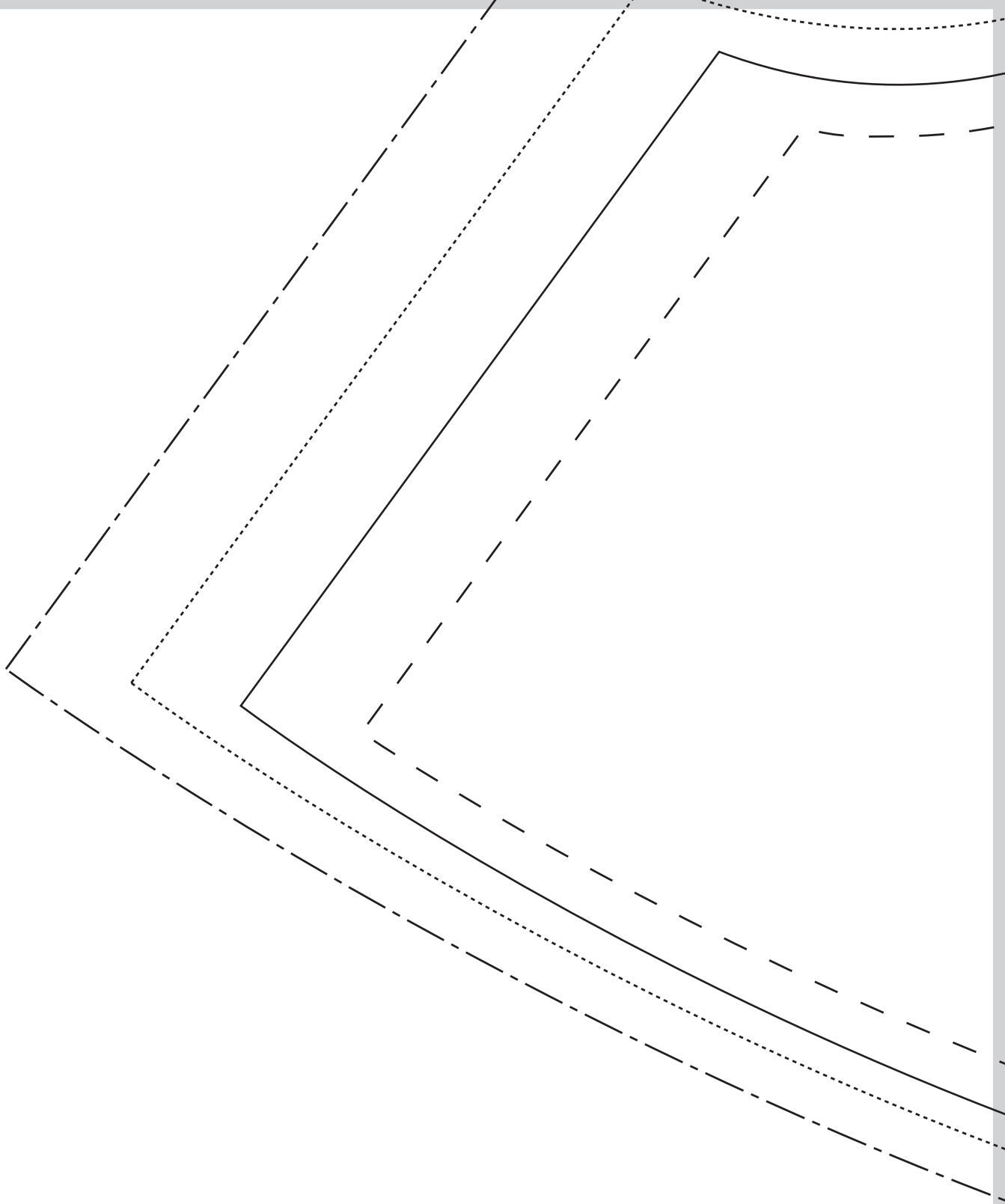
On Fold 

Cut On Fold

BACK
YOKE







XL

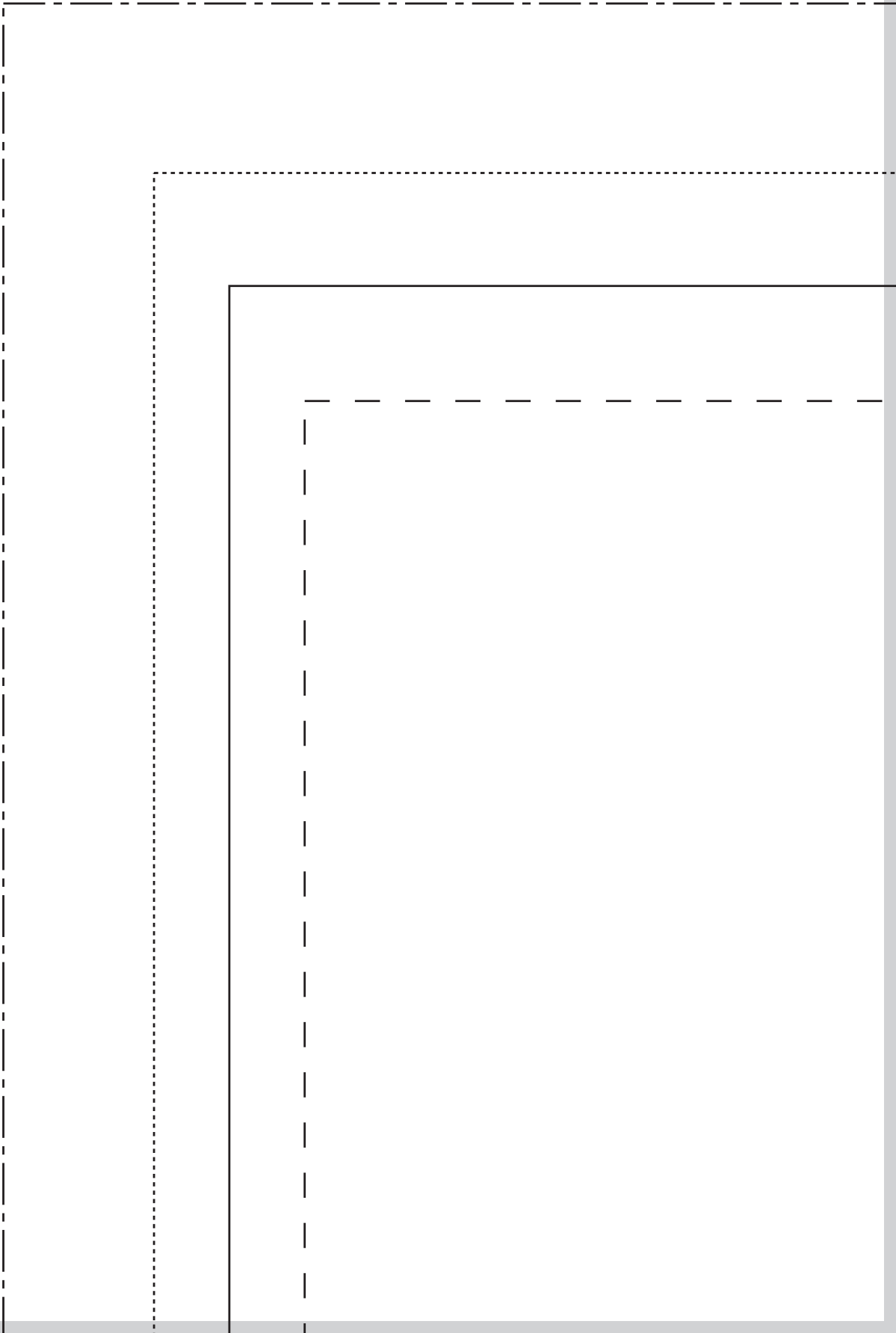
L

M

S

FLUTTER SLEEVE

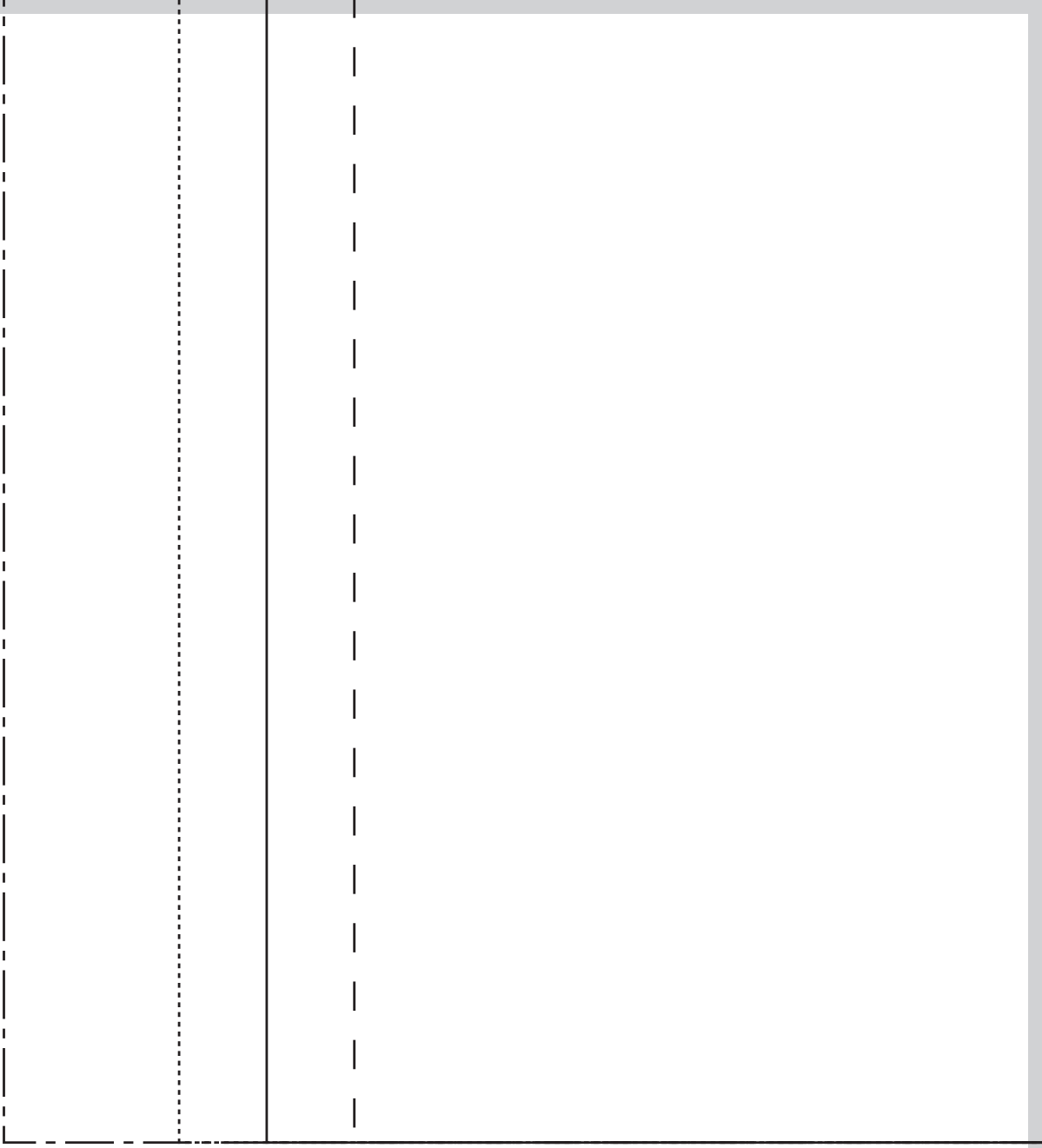
Cut On Fold



FRONT

and

BACK



— Cut On Fold —

